



Sidwell Segalwe
083 383 1822
sidwell@snooksestates.co.za

Contact Head Office

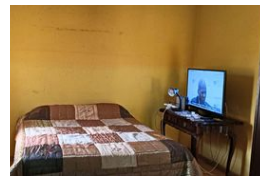
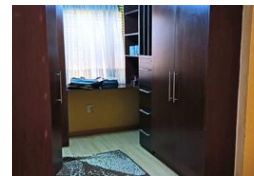
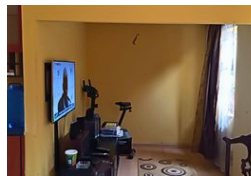
071 8719289

43 Main Rd
Meredale
Johannesburg



SOLE MANDATE

Web Ref RL8747



R750,000

Monthly Bond Repayment R7,614.22

Calculated over 20 years at 10.75% with no deposit.

Transfer Costs R25,898.00 **Bond Costs** R19,565.00

These calculations are only a guide. Please ask your conveyancer for exact calculations.

 2  1

2-Bedroom House for Sale in Protea Glen Extension 16

Bedrooms:

2 spacious bedrooms.

Main bedroom features a fitted closet for ample storage.

Bathroom: 1 full bathroom for convenience.

Kitchen: Fully fitted kitchen with modern finishes.

Living Area: Open-plan lounge and dining area, creating a bright and spacious living environment.

Additional Features:

2 outside rooms, perfect for storage, a home office, or guest accommodation.

Business potential: Space suitable for a butchery, grocery store, or other business ventures.

Features

| | |
|---------------------|-----|
| Pets Allowed | Yes |
| Interior | |
| Bedrooms | 2 |
| Bathrooms | 1 |
| Kitchens | 1 |
| Recep. Rooms | 1 |
| Furnished | No |

| | |
|---------------------|-----|
| Exterior | |
| Carports / Parkings | 2 |
| Security | Yes |
| Pool | No |

